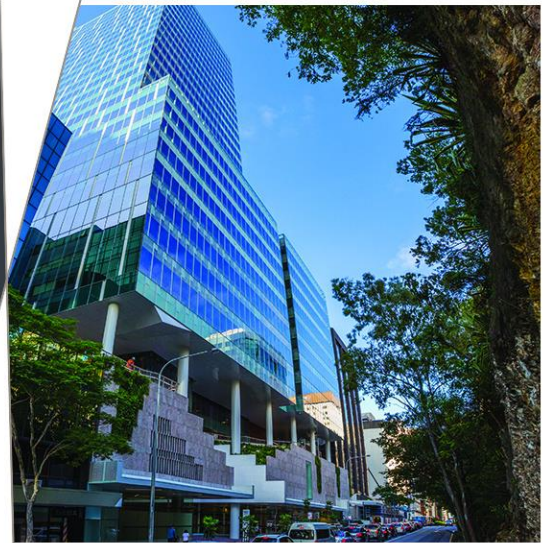


Waste Management Plan

18-22 Spring Street & 21-25 North Parade

50522025



Prepared for
NSW Land and Housing Corporation

13 December 2022



now



Contact Information

Cardno (NSW/ACT) Pty Ltd

Cardno now Stantec
ABN 17 007 820 322

Eastern Core, Level 4
2 Constitution Avenue
Canberra ACT 2601
Australia

www.cardno.com
www.stantec.com

Document Information

Prepared for	NSW Land and Housing Corporation
Project Name	18-22 Spring Street & 21-25 North Parade
File Reference	Waste Management Plan.docx
Job Reference	50522025
Date	13 December 2022
Version Number	2

Author(s):

Tim Murphy
Civil Engineer

Effective Date 13/12/2022

Approved By:

John Sutcliffe
Senior Project Manager

Date Approved 13/12/2022

Document History

Version	Effective Date	Description of Revision	Prepared by	Reviewed by
1	26/08/2022	WMP	MM	JS
2	16/9/2022	Revised WMP	MM	JS
3	13/12/2022	Final WMP	TM	JS

© Cardno. Copyright in the whole and every part of this document belongs to Cardno and may not be used, sold, transferred, copied or reproduced in whole or in part in any manner or form or in or on any media to any person other than by agreement with Cardno.

This document is produced by Cardno solely for the benefit and use by the client in accordance with the terms of the engagement. Cardno does not and shall not assume any responsibility or liability whatsoever to any third party arising out of any use or reliance by any third party on the content of this document.

Our report is based on information made available by the client. The validity and comprehensiveness of supplied information has not been independently verified and, for the purposes of this report, it is assumed that the information provided to Cardno is both complete and accurate. Whilst, to the best of our knowledge, the information contained in this report is accurate at the date of issue, changes may occur to the site conditions, the site context or the applicable planning framework. This report should not be used after any such changes without consulting the provider of the report or a suitably qualified person.

Table of Contents

1	Applicant and Project Details	1
2	Demolition	2
3	Construction	3
4	Waste Analysis – 18 – 22 Spring St	7
4.1	Waste Generation	7
4.2	Ongoing Management	7
5	Waste Analysis – 21-25 North Pde	8
5.1	Waste Generation	8
5.2	Ongoing Management	8

Tables

Table 3-1	18-22 Spring Street Wagga Wagga NSW 2650	3
Table 3-2	21-25 North Parade Wagga Wagga NSW 2650	5
Table 4-1	18-22 Spring Street Wagga Wagga NSW 2650	7
Table 5-1	21-25 North Parade Wagga Wagga NSW 2650	8

1 Applicant and Project Details

Applicant Details	
Project No.	2021-689
Name	Land and Housing Corporation / Planning, Industry & Environment
Address	Level 4, 4 Parramatta Square, 12 Darcy Street, Parramatta NSW 2150
Phone number (s)	(02) 9374 3650
E-mail	Adam Bower Adam.Bower@facs.nsw.gov.au
Project Details	
Address of development	18-22 Spring Street & 21-25 North Parade
Lot & DP No:	Lot 35, 36 & 37 DP 21115 and Lots 56, 57 & 58 DP 21115
Existing buildings and other structures currently on the site	Three existing dwellings on each site.
Description of proposed development	A new 2-storey structure is to be constructed, containing eight 1-bedroom units and four 2-bedroom units for a total of 12 units within each site.

2 Demolition

Demolition works do not form part of the current approval.

3 Construction

Address of development: 18-22 Spring Street Wagga Wagga NSW 2650

Table 3-1 18-22 Spring Street Wagga Wagga NSW 2650

Type of waste generated	Reuse	Recycling	Disposal	Specify method of onsite reuse, contractor and recycling outlet and/or waste depot to be used
	(Quantity to be determined through detailed design)	(Quantity to be determined through detailed design)	(Quantity to be determined through detailed design)	
Excavation material				
Timber (specify)		✓	✓	Contractor to recycle timber materials where practical at appropriate local recycling facility. When recycling is not appropriate, contractor is to store in site skip bin for disposal
Concrete			✓	Contractor to store in site skip bin for disposal
Bricks/pavers			✓	Contractor to store in site skip bin for disposal
Tiles			✓	Contractor to store in site skip bin for disposal
Metal (specify)		✓	✓	Contractor to recycle metal materials where practical at appropriate local recycling facility. When recycling is not appropriate, contractor is to store in site skip bin for disposal
Glass				
Furniture				
Fixtures and fittings				
Floor Coverings			✓	Contractor to store in site skip bin for disposal
Packaging (used pallets, pallet wrap)	✓			Collected by waste contractor for reuse.
Garden organics and landscaping				
Containers (cans, plastic, glass)		✓		Contractor to store in site bin for recycling
Paper/Cardboard		✓		Contractor to store in site bin for recycling
Residual waste			✓	Contractor to store in site skip bin for disposal
Hazardous/special waste e.g. asbestos (specify)				

Other (specify)				
-----------------	--	--	--	--

Final volumes and methods for reuse, recycle or disposal are to be confirmed by the contractor prior to the commencement of works.

Address of development: 21-25 North Parade Wagga Wagga NSW 2650

Table 3-2 21-25 North Parade Wagga Wagga NSW 2650

Type of waste generated	Reuse	Recycling	Disposal	Specify method of onsite reuse, contractor and recycling outlet and/or waste depot to be used
	(Quantity to be determined through detailed design)	(Quantity to be determined through detailed design)	(Quantity to be determined through detailed design)	
Excavation material				
Timber (specify)		✓	✓	Contractor to recycle timber materials where practical at appropriate local recycling facility. When recycling is not appropriate, contractor is to store in site skip bin for disposal
Concrete			✓	Contractor to store in site skip bin for disposal
Bricks/pavers			✓	Contractor to store in site skip bin for disposal
Tiles			✓	Contractor to store in site skip bin for disposal
Metal (specify)		✓	✓	Contractor to recycle metal materials where practical at appropriate local recycling facility. When recycling is not appropriate, contractor is to store in site skip bin for disposal
Glass				
Furniture				
Fixtures and fittings				
Floor Coverings			✓	Contractor to store in site skip bin for disposal
Packaging (used pallets, pallet wrap)	✓			Collected by waste contractor for reuse.
Garden organics and landscaping				
Containers (cans, plastic, glass)		✓		Contractor to store in site bin for recycling
Paper/Cardboard		✓		Contractor to store in site bin for recycling
Residual waste			✓	Contractor to store in site skip bin for disposal
Hazardous/special waste e.g. asbestos (specify)				
Other (specify)				

Final volumes and methods for reuse, recycle or disposal are to be confirmed by the contractor prior to the commencement of works.

4 Waste Analysis – 18 – 22 Spring St

4.1 Waste Generation

Address of development: 18-22 Spring Street Wagga Wagga NSW 2650

Table 4-1 18-22 Spring Street Wagga Wagga NSW 2650

	Recyclables (11L/Dwelling/Day)		Compostable (3L/Dwelling/Day)	General Waste (8.5L/Dwelling/Day)
	Paper/ Cardboard	Metals/ plastics/glass		
Amount generated (L per development per day)	132L		36L	102L
Amount generated (L per development per week)	924L		252L	714L
Any reduction due to compacting equipment	NA			
Frequency of collections (per month)	2		4	2
Amount generated per collection	1,848L		252L	1,428L
Volume per bin	240L		240L	240L
Number and size of storage bins required	8		2	6
Number of bins provided	8		2	8
Floor area required for manoeuvrability (m ²)	Bin collection from Spring Street No manoeuvrability requirements			
Height required for manoeuvrability (m ²)	No height requirements			

The above waste generation rates have been adapted from nationally recognised rates used for the calculation of waste generated in urban areas and calibrated against similar projects delivered locally. This plan has also been reviewed against the EPA better practice guide for resource recover in residential developments. The generation rates adopted were:

1. Recyclables = 11L/Dwelling/Day
2. Compostable = 3L/Dwelling/Day
3. General Waste = 8.5L/Dwelling/Day

Wagga Wagga City Council- standard kerbside service:

- 240L Green lid food organics and garden organics bin
- 240L Yellow lid recycling bin
- 240L Red lid general waste bin

4.2 Ongoing Management

Through consultation with local government and waste contractors, it has been confirmed that the contractor managed model of waste collection is working well for similar existing developments in the LGA. As such, it is proposed that a site manager will be contracted on an ongoing basis to take the bins to the kerb for collection and return them following collection.

5 Waste Analysis – 21-25 North Pde

5.1 Waste Generation

Address of development: 21-25 North Parade Wagga Wagga NSW 2650

Table 5-1 21-25 North Parade Wagga Wagga NSW 2650

	Recyclables (11L/Dwelling/Day)		Compostable (3L/Dwelling/Day)	General Waste (8.5L/Dwelling/Day)
	Paper/ Cardboard	Metals/ plastics/glass		
Amount generated (L per development per day)	132L		36L	102L
Amount generated (L per development per week)	924L		252L	714L
Any reduction due to compacting equipment	NA			
Frequency of collections (per month)	2		4	2
Amount generated per collection	1,848L		252L	1,428L
Volume per bin	240L		240L	240L
Number and size of storage bins required	8		2	6
Number of bins provided	8		2	8
Floor area required for manoeuvrability (m ²)	Bin collection from North Parade No manoeuvrability requirements			
Height required for manoeuvrability (m ²)	No height requirements			

The above waste generation rates have been adapted from nationally recognised rates used for the calculation of waste generated in urban areas and calibrated against similar projects delivered locally. This plan has also been reviewed against the EPA better practice guide for resource recover in residential developments. The generation rates adopted were:

4. Recyclables = 11L/Dwelling/Day
5. Compostable = 3L/Dwelling/Day
6. General Waste = 8.5L/Dwelling/Day

Wagga Wagga City Council- standard kerbside service:

- 240L Green lid food organics and garden organics bin
- 240L Yellow lid recycling bin
- 240L Red lid general waste bin

5.2 Ongoing Management

Through consultation with local government and waste contractors, it has been confirmed that the contractor managed model of waste collection is working well for similar existing developments in the LGA. As such, it is proposed that a site manager will be contracted on an ongoing basis to take the bins to the kerb for collection and return them following collection.